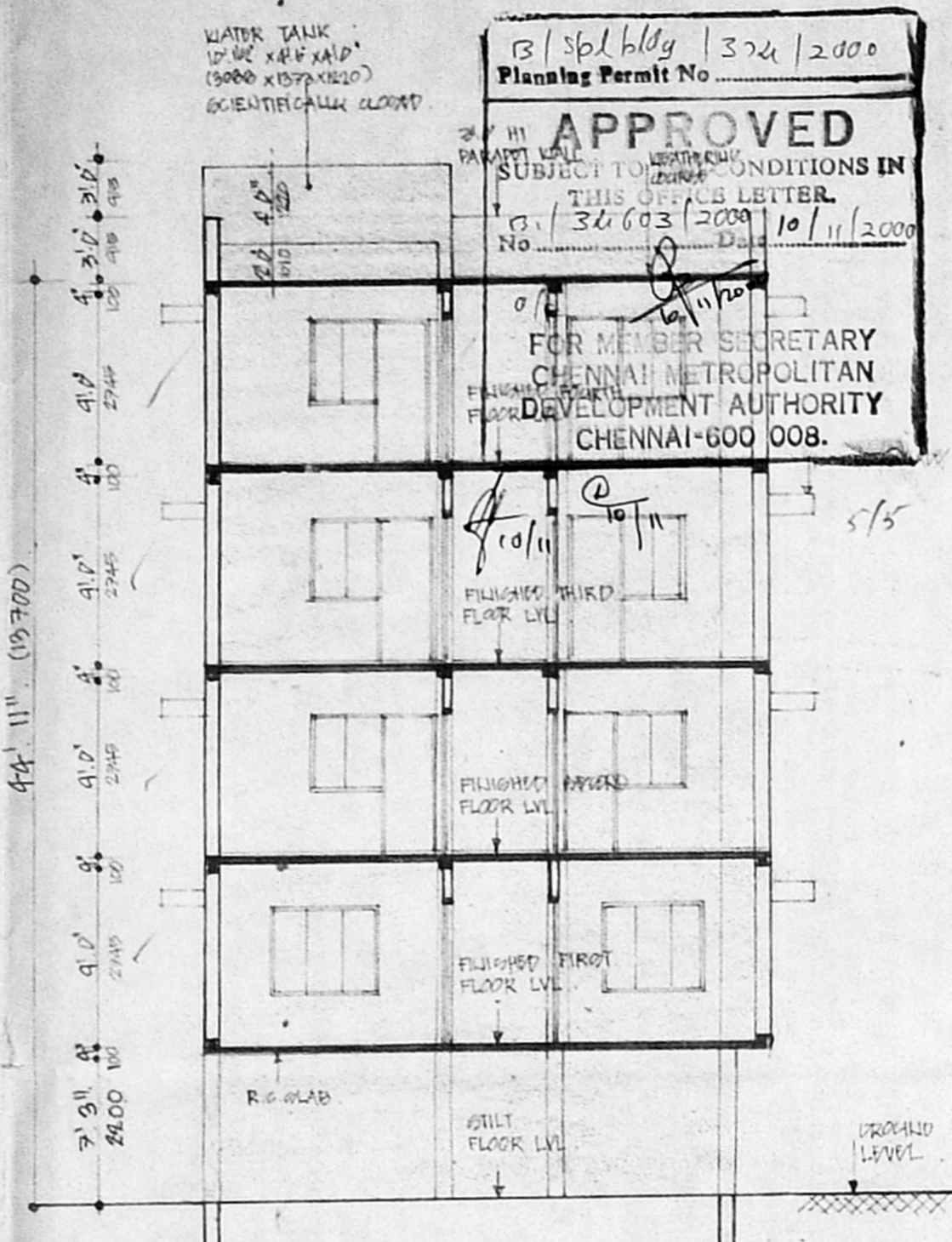
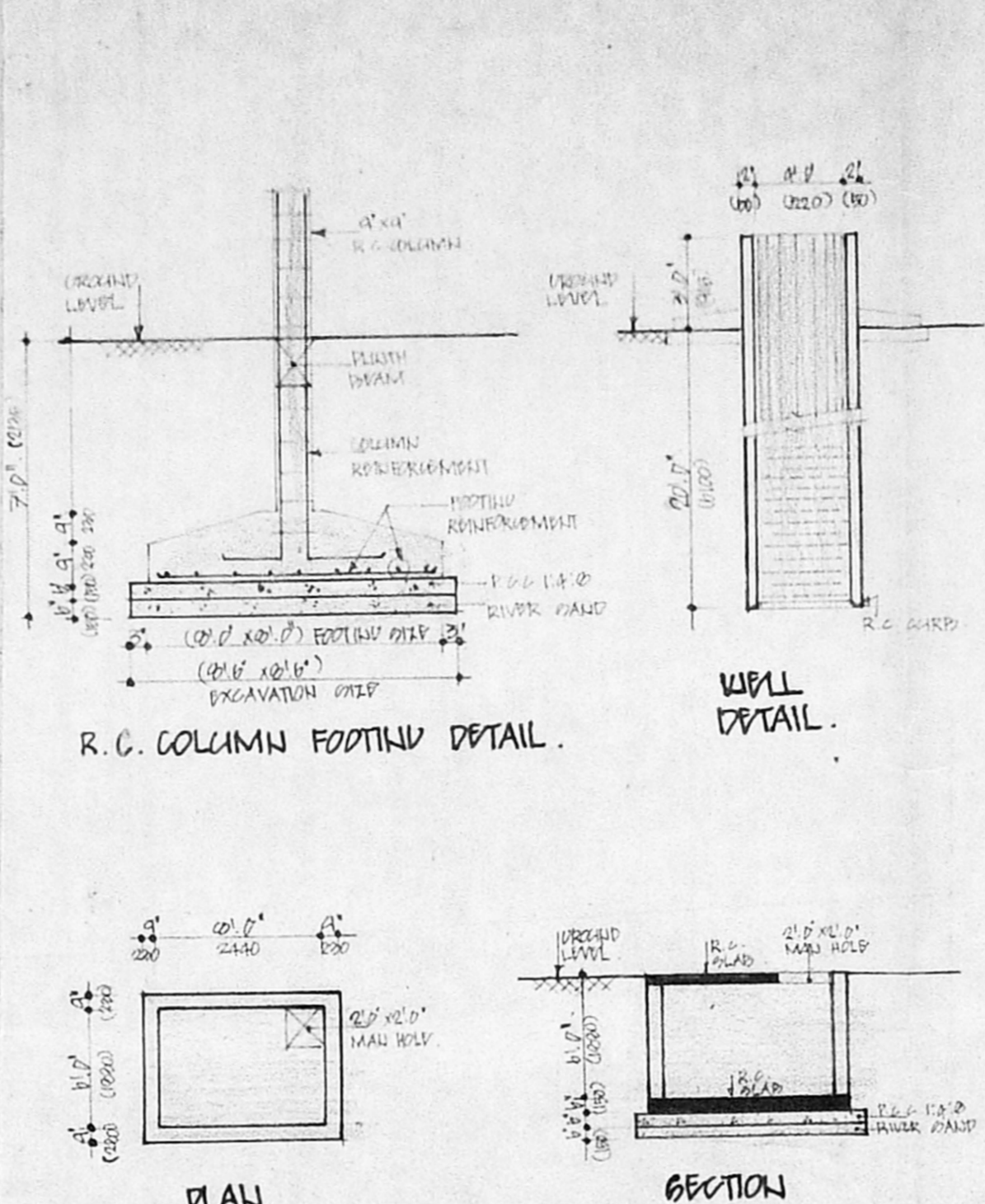


FRONT ELEVATION.



SECTION ON 'AA'



R.C. COLUMN FOOTING DETAIL.

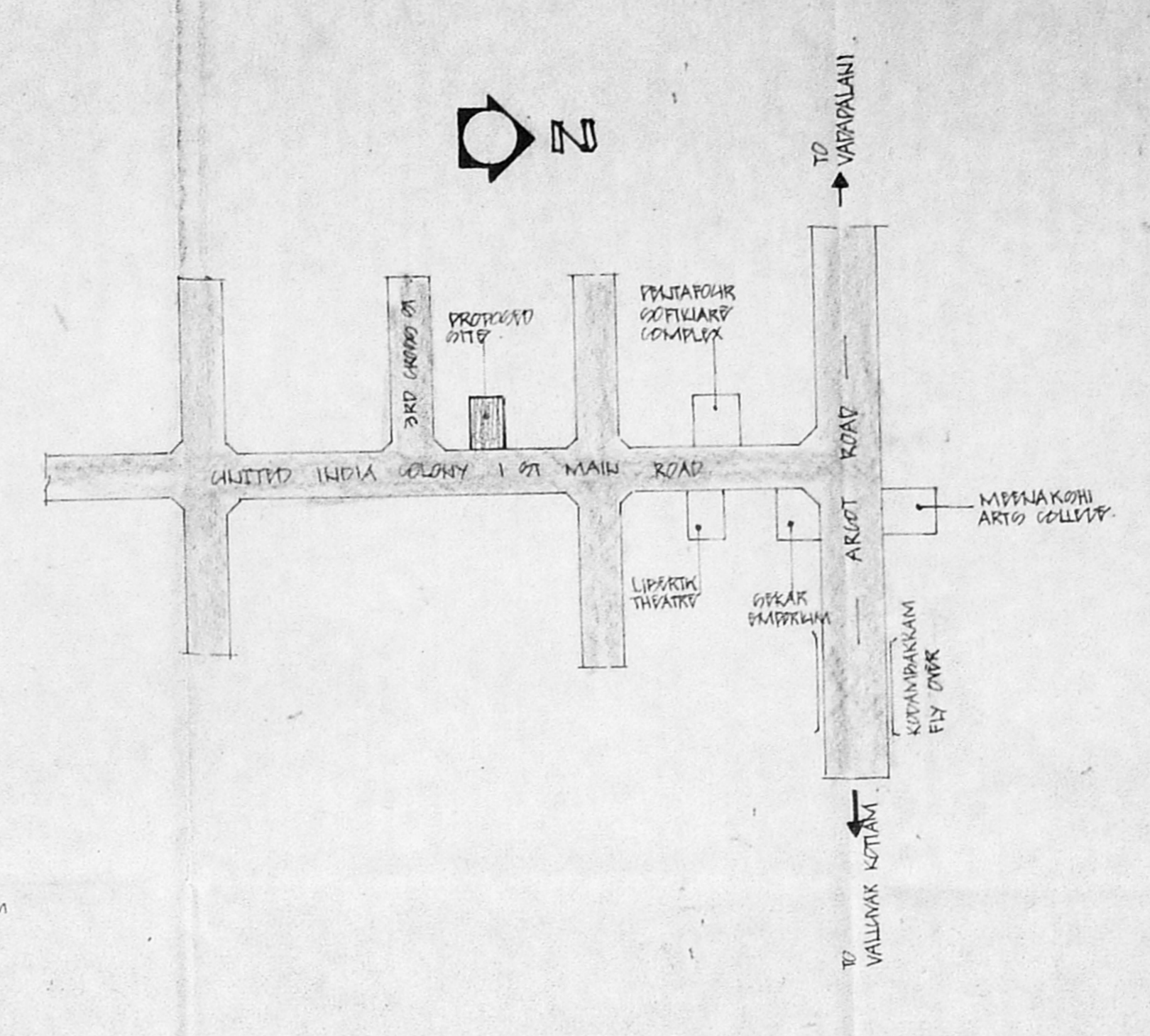
WALL DETAIL.

COMPOUND WALL DETAIL.

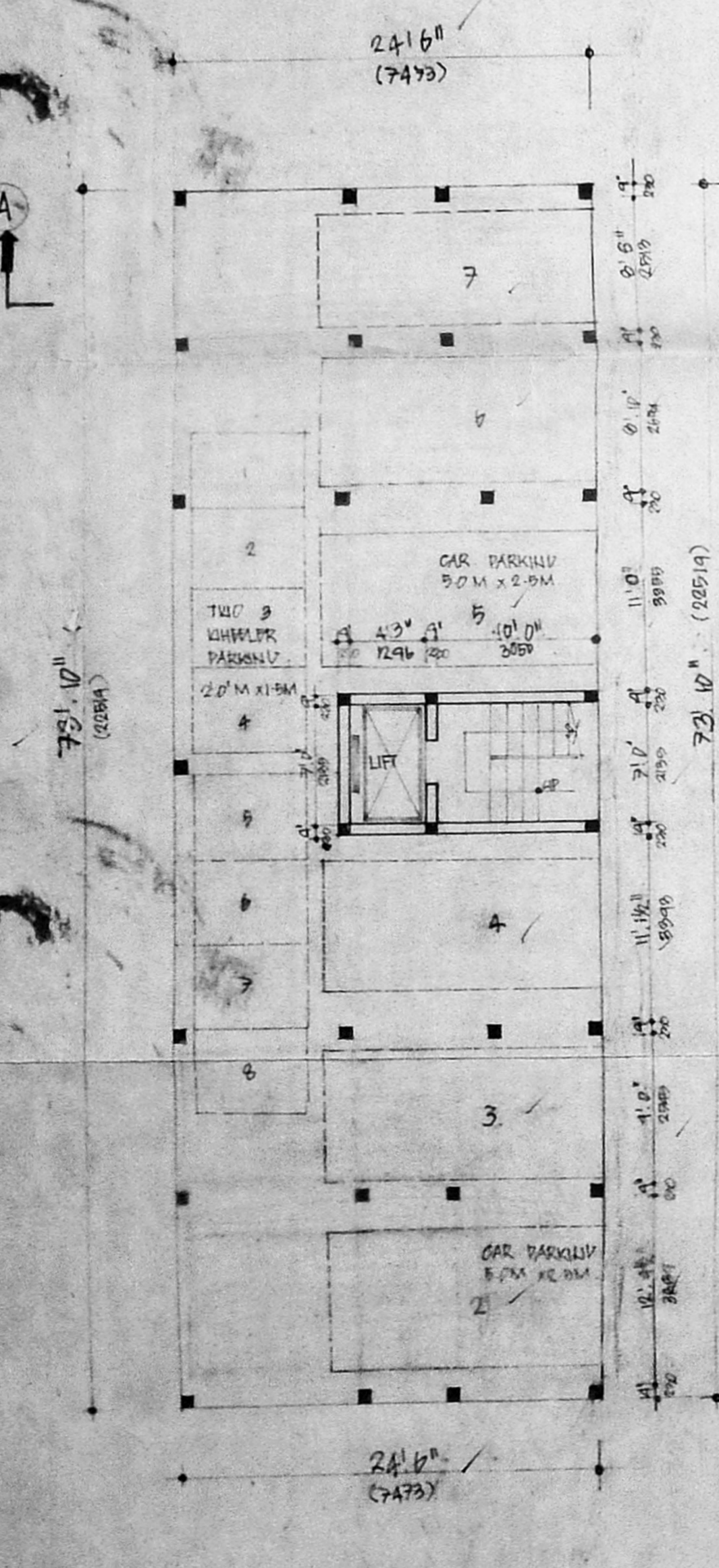
PLAN

SECTION

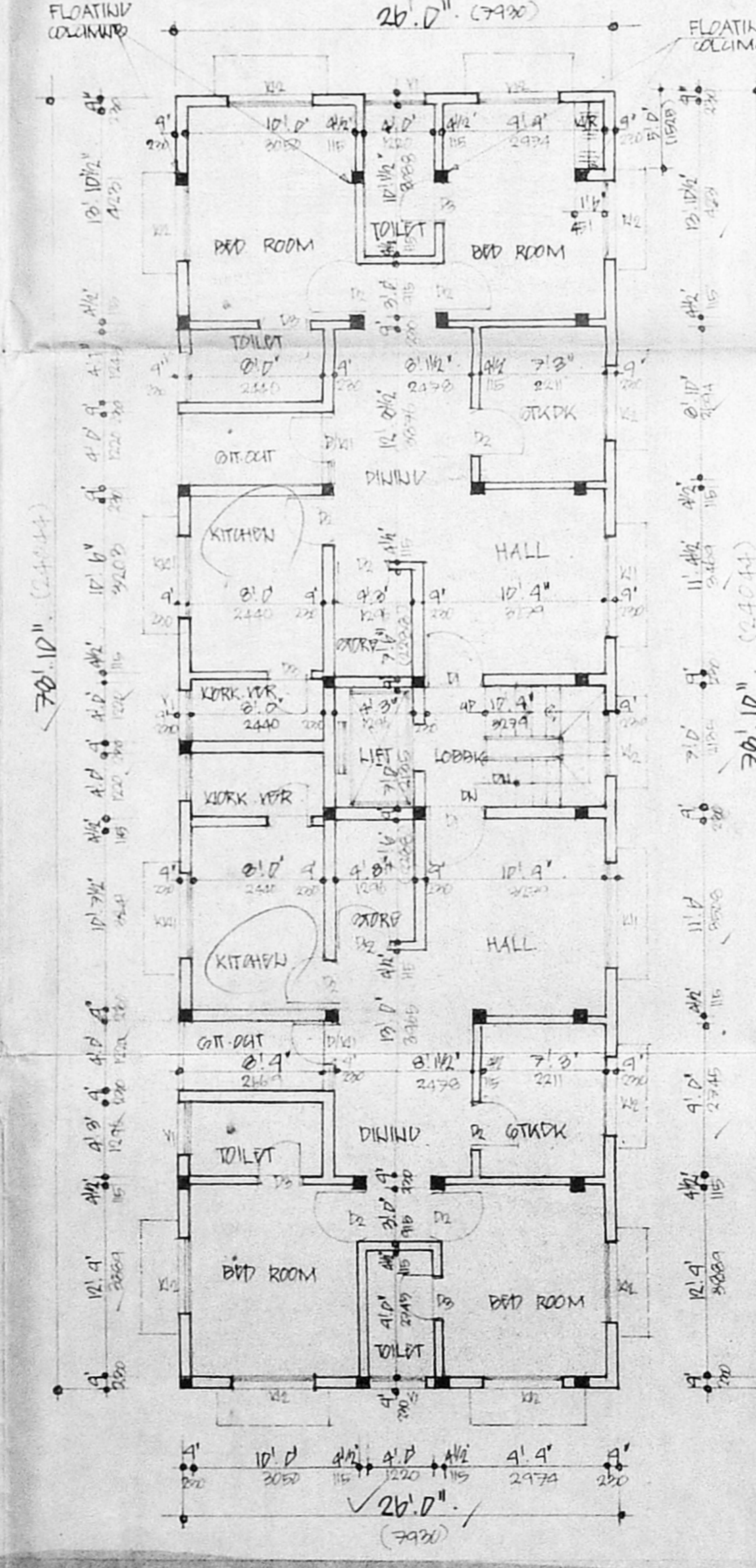
RAIN WATER HARVESTING DETAIL.



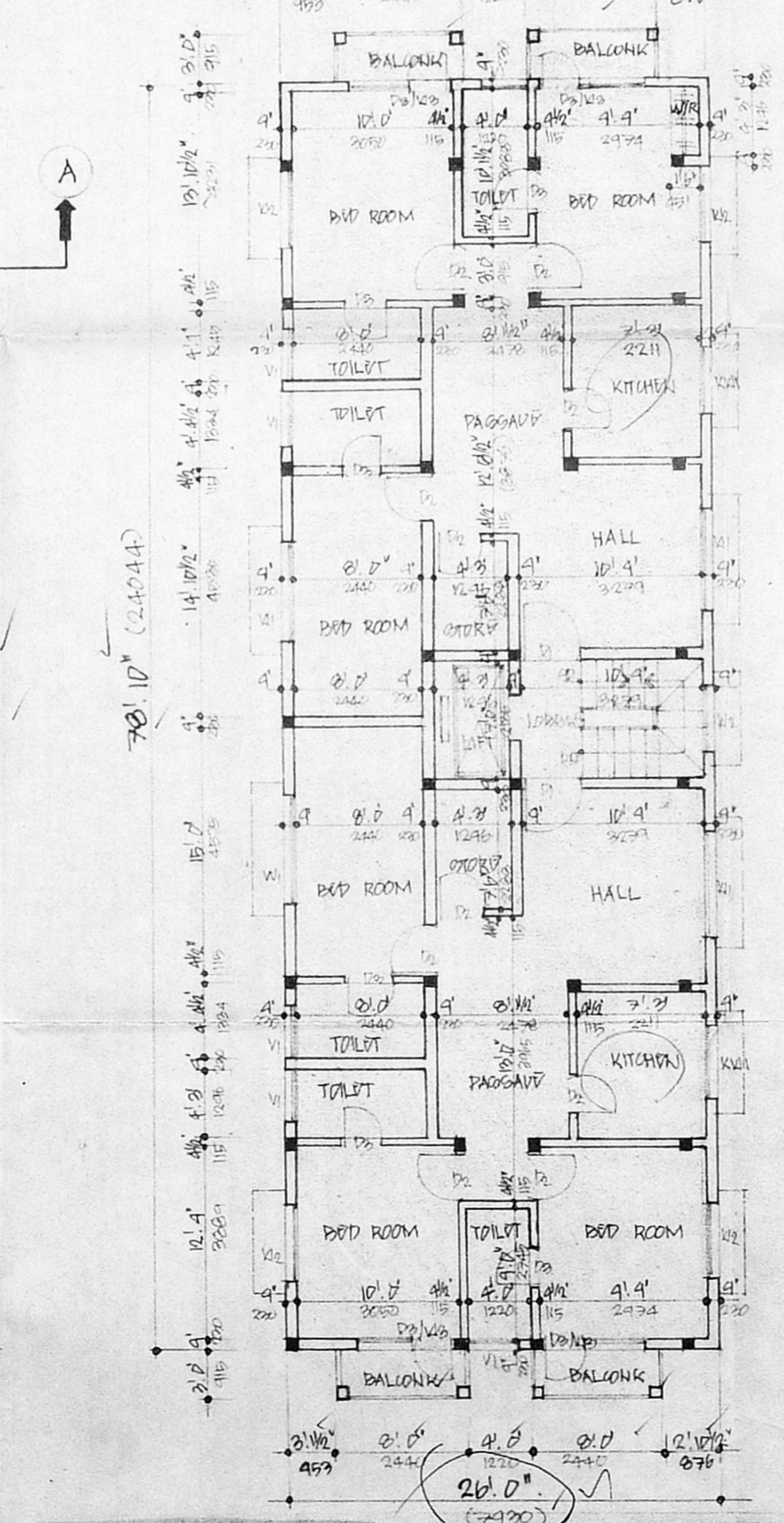
SITE PLAN.



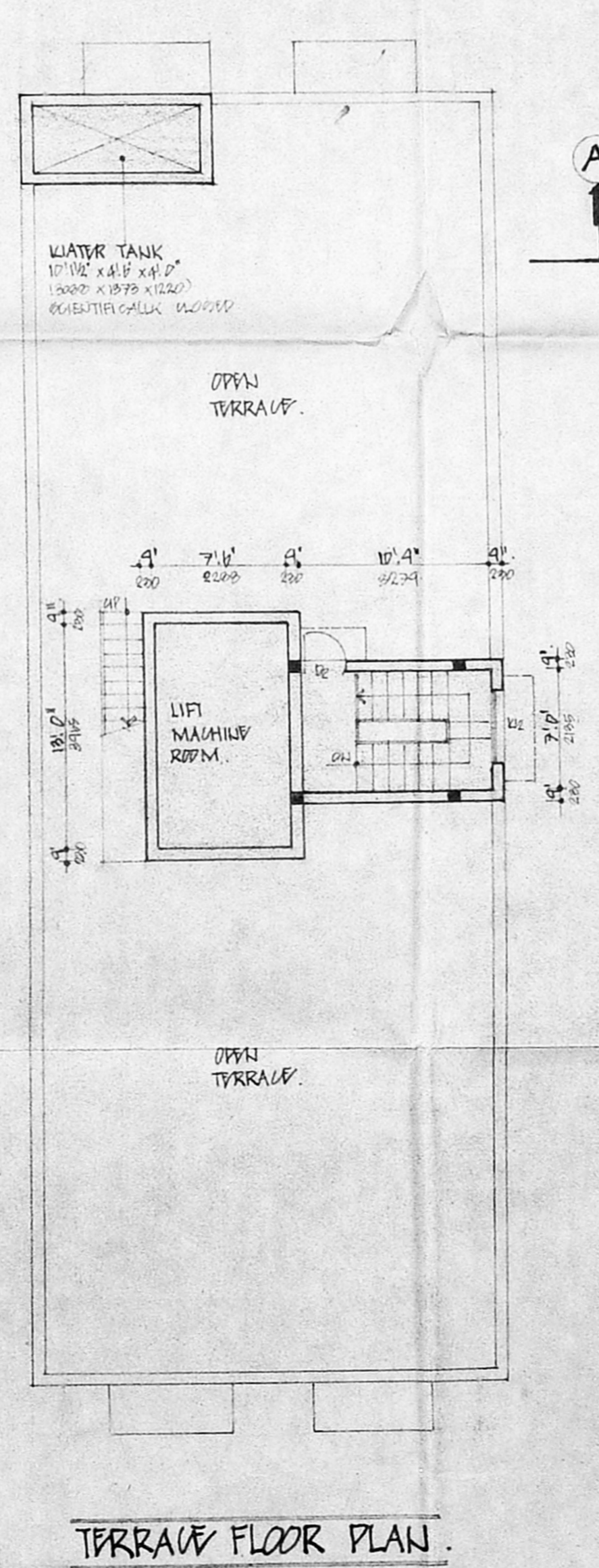
GROUND FLOOR PLAN AT 0.0' LVL.



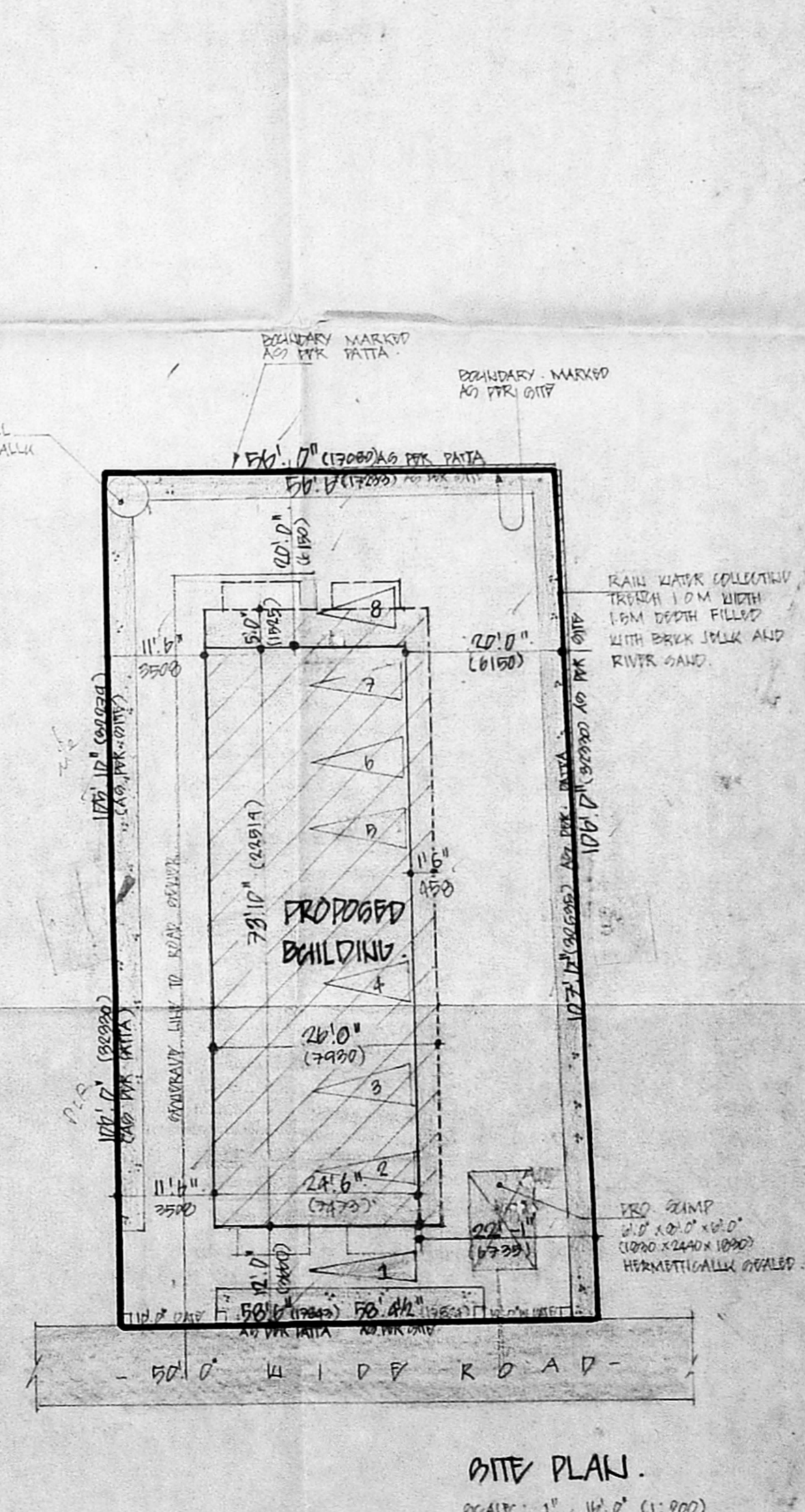
FIRST - FLOOR PLAN (AT +7.7' LVL).



TYPICAL FLOOR PLAN (SECOND THIRD & FOURTH FLOOR)



TERRACE FLOOR PLAN.



SITE PLAN.

Planning Permit No. 374/2000  
**APPROVED**  
 SUBJECT TO THE CONDITIONS IN THIS OFFICE LETTER.  
 C.No. 36603/2000  
 Dt. 6.11.2000  
 FOR MEMBER SECRETARY  
 CHENNAI METROPOLITAN  
 DEVELOPMENT AUTHORITY  
 CHENNAI-600 008.

**REVISIONS**

- R.C. COLUMN FOOTING IN EXCAVATION
- PORTLAND CEMENT CONCRETE ON SLAB BEAMS
- NORMAL FLOORING
- PAVING WORK IN BALCONY AND ROOF TERRACE
- IN SIA LVL
- WALLS ARE PLASTERED
- WALLS ARE FINISHED BY WHITE WASH
- LIGHTING FITTINGS
- JOINTS WORK AS PER SPEC
- ROOF COVERED BY TILES
- ALL R.C. WORK TO BE DONE WITH PROPER CURING
- WEATHERING COORDINATED WITH PROPER PAINT

Revised Plan  
 C.No. 36603/2000  
 Dt. 6.11.2000  
**CMDA (B) Ltr. No. 1**

**SCHEDULE OF JOBBERY**

TYPE	QTY	DESCRIPTION
D1	20.0	9" x 12" PORTLAND CEMENT CONCRETE
D2	20.0	9" x 12" PORTLAND CEMENT CONCRETE
D3	20.0	9" x 12" PORTLAND CEMENT CONCRETE
D4	20.0	9" x 12" PORTLAND CEMENT CONCRETE
D5	20.0	9" x 12" PORTLAND CEMENT CONCRETE
D6	20.0	9" x 12" PORTLAND CEMENT CONCRETE
D7	20.0	9" x 12" PORTLAND CEMENT CONCRETE
D8	20.0	9" x 12" PORTLAND CEMENT CONCRETE
D9	20.0	9" x 12" PORTLAND CEMENT CONCRETE
D10	20.0	9" x 12" PORTLAND CEMENT CONCRETE
D11	20.0	9" x 12" PORTLAND CEMENT CONCRETE
D12	20.0	9" x 12" PORTLAND CEMENT CONCRETE
D13	20.0	9" x 12" PORTLAND CEMENT CONCRETE
D14	20.0	9" x 12" PORTLAND CEMENT CONCRETE
D15	20.0	9" x 12" PORTLAND CEMENT CONCRETE
D16	20.0	9" x 12" PORTLAND CEMENT CONCRETE
D17	20.0	9" x 12" PORTLAND CEMENT CONCRETE
D18	20.0	9" x 12" PORTLAND CEMENT CONCRETE
D19	20.0	9" x 12" PORTLAND CEMENT CONCRETE
D20	20.0	9" x 12" PORTLAND CEMENT CONCRETE

**PROPOSED RESIDENTIAL FLATS AT PLOT NO: 23A**  
 DOOR NO: 19, 1ST MAIN ROAD  
 UNITED INDIA COLONY KODAMPARKAM  
 POLYTECH DIMENSION, CHENNAI  
 T. G. NO: 66, BLOCK NO: 4D.

SCALE: 1" = 8' 0" (1:200)

AREA STATEMENT	SQ. FT.	SQ. M.
GROUND FLOOR PLAN	7809.00	720.12
FIRST FLOOR PLAN	2000.00	185.02
SECOND FLOOR PLAN	2148.00	199.44
THIRD FLOOR PLAN	2148.00	199.44
FOURTH FLOOR PLAN	2148.00	199.44
TOTAL	8400.00	773.46
PLOT AREA	8092.00	747.50
PLOT COVERAGE: 85%	F.A.I: 1.44	

**COLOUR CODE REFERENTIVE**

PROPOSED ROAD: [Symbol]

PLOT BOUNDARY: [Symbol]

*[Handwritten Signature]*

**OWNER'S SIGNATURE**

*[Handwritten Signature]*  
 J. GURURAJ, S.E.  
 CLASS-I, L.E. No. 102/1999-2000  
 800, JUSTICE WALK ENCLAVE,  
 LAKSHMI NAGAR ROAD,  
 PULPITI, CHENNAI-600 088.  
 PHONE: 8858577

**LICENCED SURVEYOR.**